

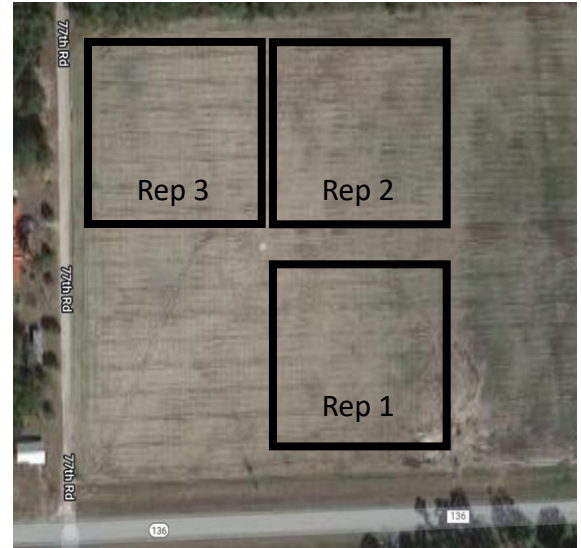
# 2022 NFREC-SV

## Grain Corn Population Trial

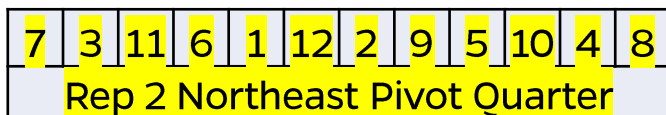
Emily Beach UF/IFAS Lafayette County Extension, Keith Wynn, UF/IFAS Hamilton County Extension, Nicholas Dufault UF/IFAS Plant Pathologist, Kevin Korus UF/IFAS Alachua County Extension, Ben Broughton, North Florida Research and Education Center-SV Farm Manager, Joel Love, UF/IFAS BMP Outreach/Education Specialist

### Purpose and Scope

The question continues to linger if there is an optimal population that will produce the most productive yields of grain corn in the Suwannee Valley region of North Florida. This trial used four varieties each planted at populations of 25,000, 30,000, and 35,000 in three reps.



### Grain Corn Population Trial Plot Map, Treatment, Variety/Population



Treat. #	Company	Variety	Population
1	Agrigold	A6659VT2PRO	25,000
2	Agrigold	A6659VT2PRO	30,000
3	Agrigold	A6659VT2PRO	35,000
4	Dyna-Gro	D54VC14	25,000
5	Dyna-Gro	D54VC14	30,000
6	Dyna-Gro	D54VC14	35,000
7	NK	NK1838-3110	25,000
8	NK	NK1838-3110	30,000
9	NK	NK1838-3110	35,000
10	Pioneer	P2042VYHR	25,000
11	Pioneer	P2042VYHR	30,000
12	Pioneer	P2042VYHR	35,000

# 2022 NFREC-SV

## Grain Corn Population Trial

### Treatment List

Prior to planting, these plots were planted in oat cover crop that was burned down with RoundUp. Plot areas were strip-tilled the day before planting on March 30, 2022. The harvest date was August 25, 2022.

#### Fertility:

0-0-60 granular broadcast at 250 lbs/acre applied before planting  
 23-9-0 liquid starter at 15 gallons/acre applied 2 X 2 at planting  
 9-7-28 granular broadcast 535 lbs/acre applied on 4-20-22  
 1<sup>st</sup> Liquid Injection of 28-0-0 at 10 gallons/acre on 5-20-22  
 2<sup>nd</sup> Liquid Injection of 28-0-0 at 15 gallons/acre on 5-27-22  
 3<sup>rd</sup> Liquid Injection of 28-0-0 at 30 gallons/acre on 6-3-22

#### Pesticide:

Counter in furrow at 5.4 lbs/acre on 3/20/22  
 Approach Prima at 6.8 oz/acre was applied via highboy on 6-6-22

#### Irrigation:

14.5" has been applied through pivot irrigation as of 6-28-22

### Total Fertilizer Usage

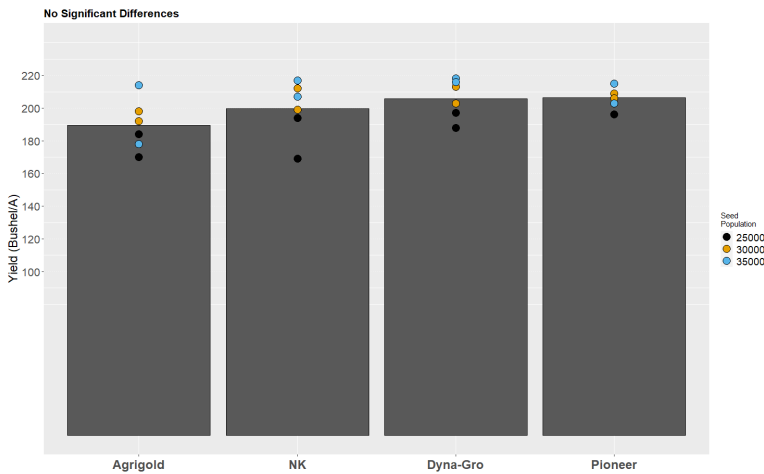
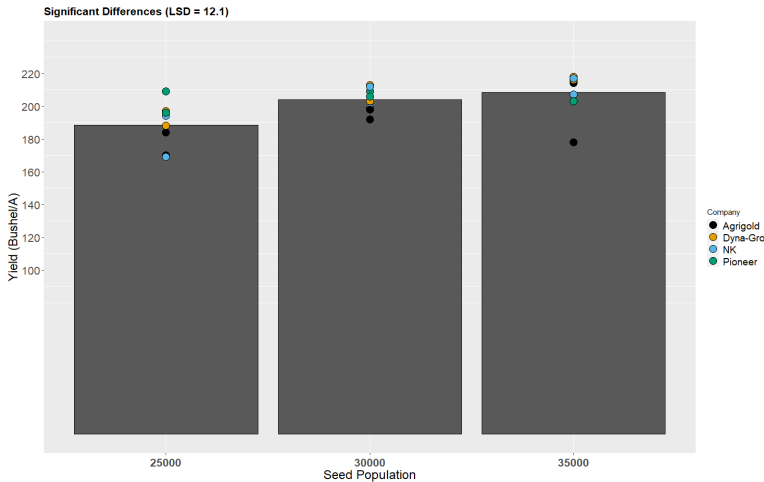
Nitrogen: 252 lbs/acre

Phosphorus: 53 lbs/acre

Potassium: 300 lbs/acre

# 2022 NFREC-SV Grain Corn Population Trial

## Results



Company by Population Results				
Company	Pop.	bu/A	Min	Max
Agrigold	25000	177.0	170	184
Agrigold	30000	195.0	192	198
Agrigold	35000	196.0	178	214
Dyna-Gro	25000	192.5	188	197
Dyna-Gro	30000	208.0	203	213
Dyna-Gro	35000	217.0	216	218
NK	25000	181.5	169	194
NK	30000	205.5	199	212
NK	35000	212.0	207	217
Pioneer	25000	202.5	196	209
Pioneer	30000	207.5	206	209
Pioneer	35000	209.0	203	215
<i>P-value</i>		0.800		